

# THE Companion <sup>Issue</sup> 42



Canine  
Companions®  
Summer 2022





# RECONNECTING AND REJUVENATING

With sincere joy, we announce that Canine Companions is back in-person, with our six campuses welcoming visitors, volunteers and hosting events. It feels like welcoming our family home once again.

On National Graduation Day in May, we hosted our first in-person graduation since the pandemic began. 46 teams graduated in front of our communities across the country, celebrating the culmination of our mission. It was inspiring to see so many come together to support our newest teams.

There are many wonderful opportunities for us to gather on the horizon. With 15 DogFest events this year, our fall events will continue to have the festival feel that organically happens when we celebrate our mission face to face. September is National Service Dog Month, and we are going big this year! We've provided many ways our supporters can spread the word about the amazing work of our service dogs (read more on page 13).

We continue to make a profound difference in the lives of people with disabilities and have taken another leap forward to serve more individuals in need. In June, we broke ground on the new Canine Health & Wellness Center, a foundational step to support our mission more effectively through veterinary, breeding and research excellence (read more on the following page).

Your support is truly valued and appreciated. From pandemics to stock market downturns, you are keeping us marching forward. We need your help now more than ever. Join us, with leashes in hand, to reconnect with our robust community of volunteers, clients and supporters. Thank you for your support!

Best regards,  
*Paige Mazzoni*  
 Paige Mazzoni  
 Canine Companions Chief Executive Officer

*John McKinney*  
 John McKinney  
 Canine Companions Board Chair



## Breaking Ground

On June 10, the first shovels hit the ground at the Jean and Charles Schulz Campus to kick off the construction of the new Nelson Schulz Canine Health & Wellness Center. The new building complex will host the Schulz Veterinary Hospital and the Nelson Canine Early Development Center.

With completion slated for 2023, the center will increase the number of puppies we can bring into the world, helping us provide more high quality service dogs. The Nelson Canine Early Development Center will expand

our research capabilities and uphold our organization's commitment to excellence in dog health, as well as the identification of behaviors and traits that are important for successful service dogs.

Finally, the center is designed to welcome our community into our work, providing more opportunities for volunteers to interact with our mission - and our puppies!

For more information, email [vision@canine.org](mailto:vision@canine.org).



## HIGHLIGHTS

Mikayla and Bernie  
 Take on the World  
 page 8

A Walk To Remember  
 page 10

A Perfect Pair:  
 Oliver and Ziti  
 page 13

Investing In  
 Independence  
 page 20

Dixon Makes All  
 The Difference  
 page 4

A Tiger Named Enzo  
 page 6



# Dixon Makes ALL The Difference

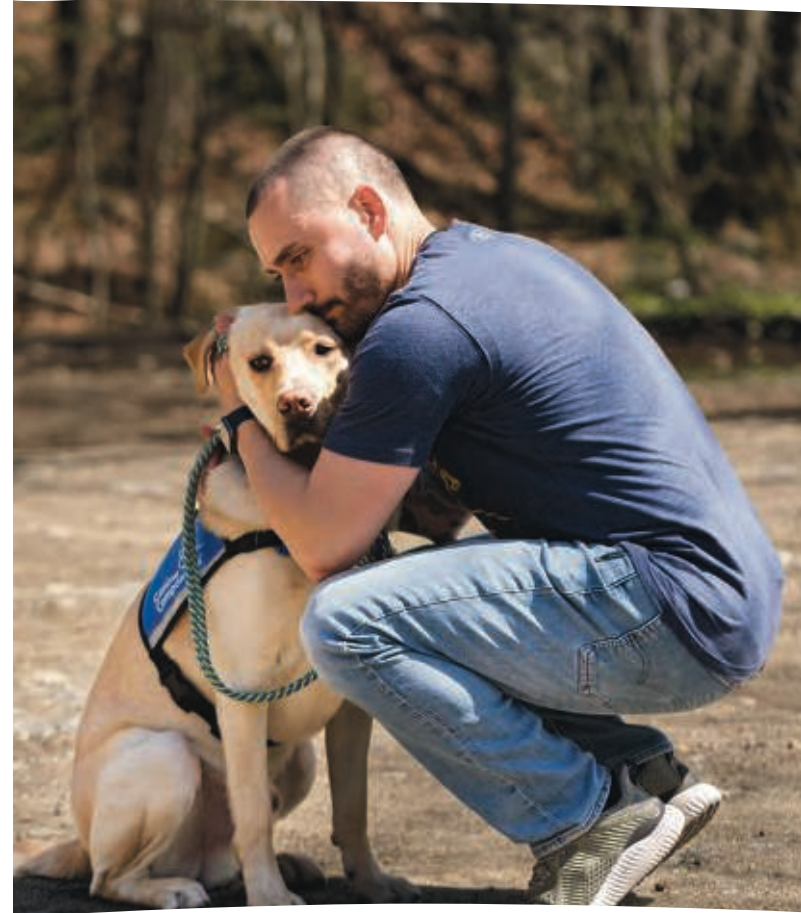
U.S. Marine Roger Rua completed over 100 security patrols as a machine gunner in Afghanistan with the 9th Engineering Support Battalion, Security Platoon. He was 22 years old. On March 29, 2012, he awakened after a night on the road for an early patrol and was injured by an improvised explosive device (IED) within 10 seconds of opening his eyes. "I checked to see if I had all my limbs, realized everything was intact and I wasn't bleeding out. Then my limbs went limp. That's when I realized I had a severe spinal cord injury," he recalls.

Roger was paralyzed from the chest down. After months of rehabilitation at Walter Reed Army Medical Center, he moved his toe. Slowly, Roger not only regained sensation, but movement enough to walk again. It was the abrupt transition from Marine to civilian that became his next challenge.

"The military does a good job preparing you for war," Roger says. "But no one prepares you for coming back injured or broken."

The experience left Roger with debilitating anxiety, panic attacks and post-traumatic stress disorder (PTSD), as well as the lingering impacts of his spinal cord injury. Roger sought help from Canine Companions.

"When I met Dixon, he acted like he had been waiting for me to come home for the past two years," Roger recalls. "We had that immediate bond. I'll never forget that day."



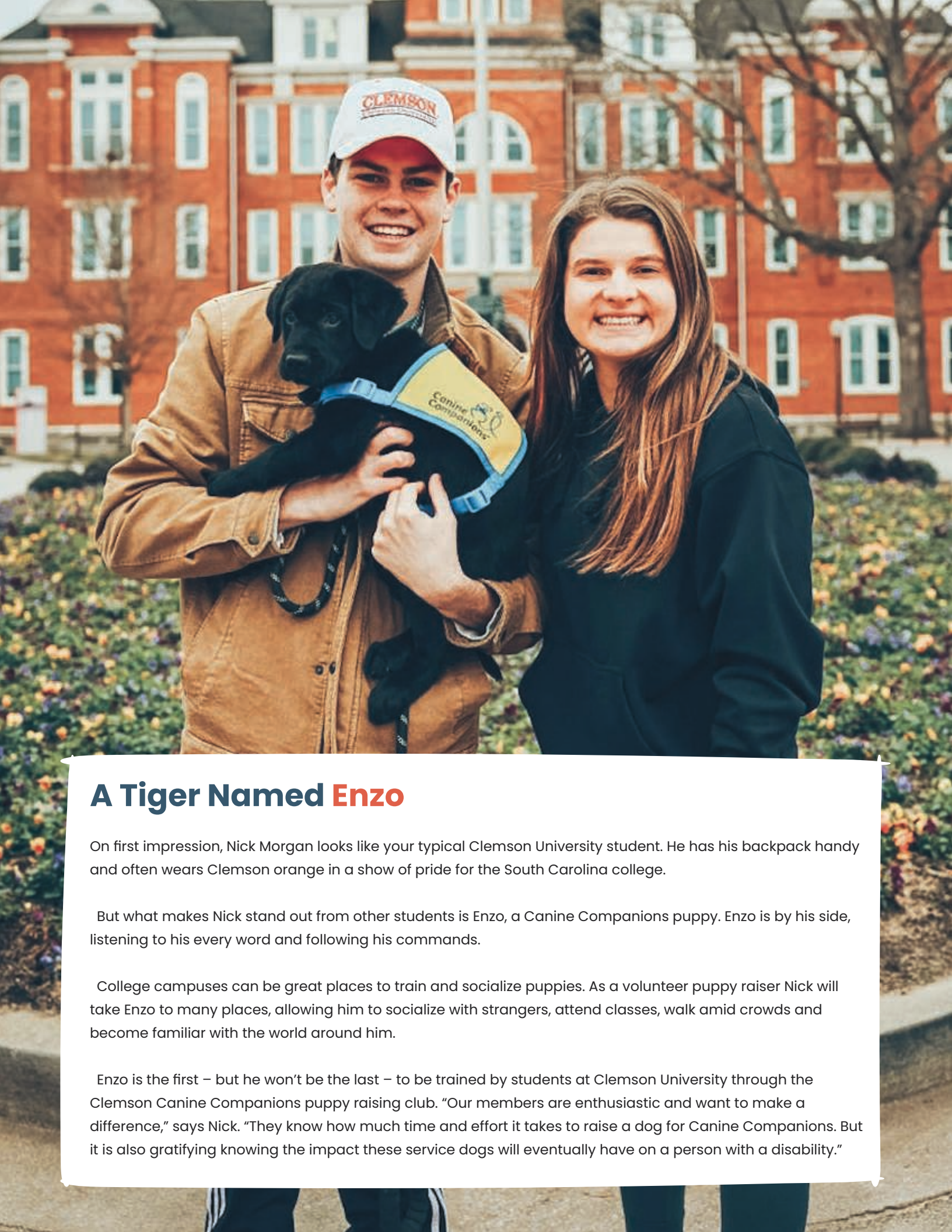
**"When I met Dixon, he acted like he had been waiting for me to come home for the past two years."**

Service Dog Dixon is trained in tasks to help with Roger's symptoms of PTSD, interrupting anxiety attacks and nightmares, and retrieving items Roger can't reach during flareups of his spine. He shares, "Dixon has helped limit my anxiety and panic attacks to a point where it's manageable. Thanks to Dixon, I can get out of the house, knowing he's there to help me physically and mentally."

At Canine Companions, every day is Independence Day. Create independence now at [canine.org/gift](https://canine.org/gift).







## A Tiger Named Enzo

On first impression, Nick Morgan looks like your typical Clemson University student. He has his backpack handy and often wears Clemson orange in a show of pride for the South Carolina college.

But what makes Nick stand out from other students is Enzo, a Canine Companions puppy. Enzo is by his side, listening to his every word and following his commands.

College campuses can be great places to train and socialize puppies. As a volunteer puppy raiser Nick will take Enzo to many places, allowing him to socialize with strangers, attend classes, walk amid crowds and become familiar with the world around him.

Enzo is the first – but he won't be the last – to be trained by students at Clemson University through the Clemson Canine Companions puppy raising club. "Our members are enthusiastic and want to make a difference," says Nick. "They know how much time and effort it takes to raise a dog for Canine Companions. But it is also gratifying knowing the impact these service dogs will eventually have on a person with a disability."

## THE CANINE COMMUNITY IS LAUNCHING

Canine Companions will soon launch a new and interactive online community for volunteers and clients, replacing the current community blog. The Canine Community makes it easy for volunteers to find resources, participate in discussions and ask questions. Through frequent posts, articles and resources, this new online community will help our volunteers connect, learn and grow interacting with their local volunteers, chapter leadership and regional and national staff.

Stay tuned for more information on how to access the Canine Community!

## ONE SIMPLE ACT

Canine Companions volunteers make our mission possible. One simple act of volunteerism can have a lasting impact.

**"What I love most about volunteering for Canine Companions is the camaraderie and support from fellow volunteers in my region."**

– Andrea Spencer, volunteer puppy raiser and DogFest Long Island/NY co-chair

**"It was quite by accident that I found Canine Companions. I was invited to a graduation ceremony, and after meeting those being helped, I was hooked."** – John Bickham, workplace volunteer

**"The friendships I have made with the Canine Companions community keep me coming back. I can't imagine a time when there is not a puppy in a yellow vest at my side."** – Jill Leipelt, volunteer puppy raiser



## IT ALL STARTS WITH A PUPPY

Twenty-five years ago, Sharon Mosbaugh spotted a Canine Companions puppy with their volunteer puppy raiser. She was inspired. As a school's assistant principal, Sharon was matched with a facility dog but she wanted to do more for Canine Companions.

Sharon and her husband, Bill, jumped wholeheartedly into the mission as volunteer breeder caretakers. To date, more than 200 Canine Companions puppies have been born and raised in their home until they are eight weeks old.

"I love being a breeder caretaker. When I send a litter of puppies off, I feel like I'm sending love out into the world," Sharon says. "These dogs have taught me how to be better at loving unconditionally."

Bill and Sharon received even more love when they welcomed Service Dog Zari into their home. Bill, a Vietnam veteran living with Parkinson's disease, now has Zari to tug him out of his chair and retrieve his medication bag. Zari has allowed Sharon to step back and watch Bill be more independent.

Learn more about volunteer opportunities at [canine.org/volunteer](https://canine.org/volunteer).



# Mikayla and Bernie

## Take on the World

When Mikayla Molien was just 12 years old, she began experiencing intense pain and swelling, and she spent three weeks at UCSF Benioff Children's Hospital in San Francisco. That's when she was introduced to Canine Companions, an introduction that would change her life.

Mikayla was on her maximum dosage of pain medication and still in excruciating pain. She also had high blood pressure, worrying doctors and nurses. Her team decided to bring in Canine Companions Facility Dog Nilani, who jumped up into her hospital bed and snuggled with her, reducing Mikayla's blood pressure and allowing her to fall asleep. Mikayla shares, "That's the first time I understood what a dog can do for you when you're in crisis. Nilani and Canine Companions did so much for me in that moment."

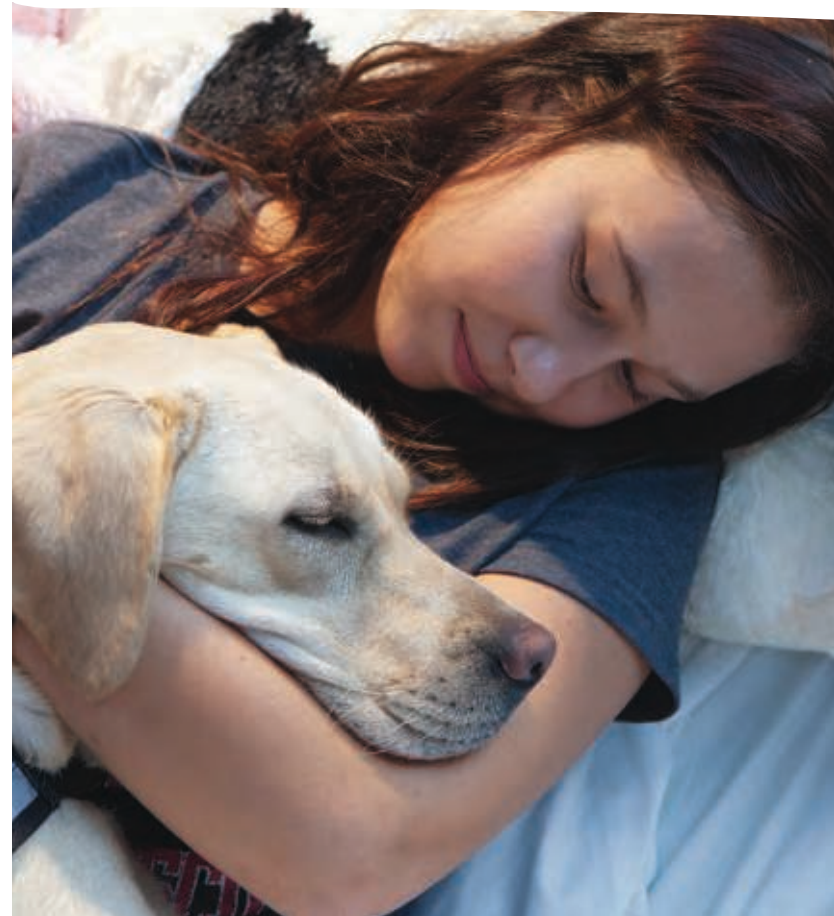
Nilani provided motivation and made a difficult hospital stay a bit easier. "She's the reason that I wanted to get up, the reason I wanted to walk, the reason to keep going," Mikayla says. "After I was discharged, at on-site appointments I would still go see Nilani."

At 16 years old, Mikayla was diagnosed with hereditary angioedema. Then at 21, she was diagnosed with Ehlers-Danlos syndrome, which causes joint dislocations, pain and fatigue. Mikayla knew it was time to apply for her own service dog.

Mikayla was matched with Service Dog Bernadette in November 2021 and the two have

been inseparable ever since. Bernadette, known as "Bernie," is expertly trained in more than 45 tasks including opening doors, picking up dropped items, and more!

"Bernie gives me a newfound sense of independence and confidence that I didn't have before. Her ability to pull me in my wheelchair, retrieve my medication and more is incredible." Mikayla continues, "I don't need to ask for help; I can do it on my own with Bernie by my side."



**"I don't need to ask for help; I can do it on my own with Bernie by my side."**

Is a service dog right for you? Learn more about task-trained service dogs at [canine.org/apply](https://canine.org/apply).





## A Walk To Remember

Every morning, Trulette Claves and her husband Jeff Partrick stroll the beach near their home in La Jolla, California. A chance encounter with volunteer puppy raiser Mary Milton and Canine Companions puppy Emmett would result in an outstanding gift.

Trulette's Uncle Joe – a generous man who adored dogs – established the Joseph Claves III Charitable Trust to fund organizations that work with a variety of Joe's interests. Trulette was named as a trustee, along with her uncle's longtime friend and business partner, Brendan Holmes.

"The mission of the trust was very clear that it should support organizations serving children and dogs," Trulette says. Joe gave Trulette and Brendan the responsibility of choosing charities to support, and Canine Companions was top of mind.

"I know my uncle would have enjoyed Canine Companions program and mission," states Trulette. "It's fabulous what Canine Companions does to help people who need assistance. Meeting Mary was just the perfect place and time."

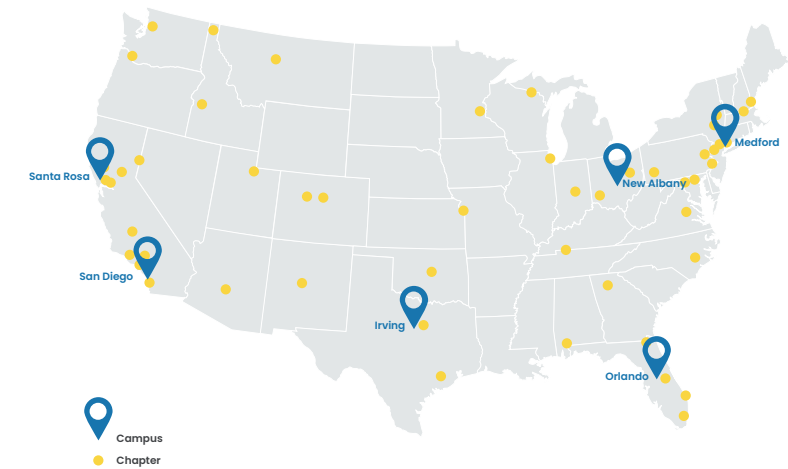
Last year, the trust generously donated a \$250,000 endowment gift to Canine Companions Southwest Region that will help support our mission for years to come. Trulette and Brendan chose to create an endowment specifically because of the ongoing support it provides. Thanks to their endowment gift, the Dean, Gerda and Trixie Koontz Training Center's main training room is now named in Joe's honor.

## Meet The Newest Volunteer Chapters

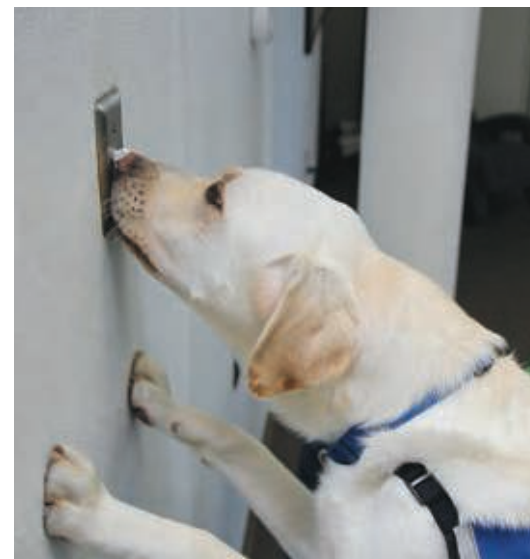
Becoming an official Canine Companions volunteer chapter is no small feat. Our dedicated volunteers took the necessary steps to receive their charters, bringing our total number of volunteer chapters to 51.

While some of our newest chapters have been long-established volunteer groups, becoming an official chapter provides additional support from our regional training centers, as well as tools for public outreach. Congratulations to our new volunteer chapters!

Learn more about our volunteer chapters at [canine.org/locations](https://canine.org/locations).



## Canine Companions Goes Green



Soon after moving into our 11-acre, 39,000-square-foot Northeast Region Training Center in 2010, it became apparent monthly energy bills needed to be lowered. Fast-forward to 2022 and five lighting projects later, we're reaping the benefits of our local power company, Public Service Enterprise Group's (PSEG) Commercial Efficiency program to help decrease energy costs.

"For any business, but especially as a non-profit, reducing and keeping expenses as low as possible

is key to successfully sustaining our mission. It's a win-win because we're also saving energy," says Northeast Region Executive Director Debra Dougherty.

Canine Companions has been selected as PSEG's first monthly Green Business Leader. With the energy company's help, the Northeast Region installed hundreds of efficient indoor and outdoor LED replacement fixtures, lowering wasted energy and resulting in cost savings of over \$23,000 per year!



### Invest in Independence Monthly

Become a monthly donor and see your dollars at work, training Canine Companions puppies and service dogs.

Donate \$25 or more and get a free tote! Visit [canine.org/givemonthly](https://canine.org/givemonthly).

### Make-A-Will Month

August is National Make-A-Will Month and Canine Companions wants to help! Creating an estate plan is a powerful way to protect your loved ones and support the causes that are close to your heart.

Canine Companions invites you to use FreeWill to create a will (or trust if you live in California) for free. To start your plan, visit [canine.org/planned-giving](https://canine.org/planned-giving).

For more information, please contact Charmaine Stainbrook at 707-577-1789 or [pginfo@canine.org](mailto:pginfo@canine.org).







## *Freedom, Thanks to Oso*

Erica Jones was 24 years old and a successful nurse in Atlanta, Georgia when her life was turned upside down. Her boyfriend at the time left her clinging to life with a spinal cord injury, paralyzing her from the neck down.

Erica transferred to the Shepherd Center for rehabilitation and worked with Canine Companions Facility Dog Colin and his handler, Outpatient Physical Therapist Ashley Kim. Colin was a welcome distraction from the drastic changes in her life. Colin would lie with her, provide motivation and cheer her up.

When Erica left the Shepherd Center, she applied for her own Canine Companions service dog, hoping to live more independently and confidently. Service Dog Oso – Erica’s perfect match – would make those goals possible. Oso is trained in over 45 skills, and primarily helps Erica by picking up items, tugging open doors and turning on lights. Without his help, Erica would rely on others for these daily tasks.

With Oso’s help, Erica can live her life to the fullest, even living on her own again. “Getting Oso gave me joy and independence, along with the freedom to start helping other domestic violence survivors.”

Erica is a voice for others in similar situations and she shares her story while advocating for survivors of domestic violence and educating whoever will listen – all with Oso by her side.

**“Getting Oso gave me joy and independence along with the freedom to start helping other domestic violence survivors.”**



## **A Perfect Pair: Oliver and Ziti**

For 10-year-old Oliver, Service Dog Ziti brings newfound independence, confidence and a whole lot of love.

Oliver was born with a disability and uses a wheelchair to get around. He loves Legos and plays adaptive sports. He also enjoys a good book or movie, and whether they’re outside playing or curled up together relaxing, Oliver and Ziti have become a perfect pair.

Service Dog Ziti is trained to help Oliver with daily tasks to provide the independence that every child desires.

“Sometimes, it’s hard for Oliver to get items from one end of the house to the other,” Lacy, Oliver’s mom, says. “Ziti helps tug a box with those items wherever he needs it. Not only does it make things easier for Oliver, but Ziti gets so excited to do his job!”

Ziti also helps retrieve items for Oliver, like his shoes or even a dropped pencil while he is doing schoolwork. Oliver shares, “Having Ziti to pick up things I drop and knowing that he loves helping me has been awesome!”

Ziti allows Oliver to feel more confident and breaks down barriers. “For Oliver and Ziti it was love at first sight,” says Oliver’s dad, Stephen. “Oliver has matured so much already, and he seems so confident when strolling along with Ziti. It feels like Ziti has always been part of our family!”

## **Celebrate National Service Dog Month**

While we celebrate service dogs every day, here at Canine Companions, during September’s National Service Dog Month, we’re raising awareness and showing appreciation for the extraordinary work that service dogs do every day.

Get ready to celebrate, educate and advocate with us soon! Check back for downloadable educational

materials, learning opportunities about the differences between service dogs, emotional support dogs and therapy dogs, and a chance to test your knowledge with fun games and activities.

Celebrate with us in September at [canine.org/servicedogmonth](https://canine.org/servicedogmonth).





**“Facility Dog Parks motivates our kids and teens that struggle with meeting physical and occupational therapy goals, creates play opportunities for our long-term patients and even provides grief support to families.”**



## **Hired by the Hospital:** **Promoting Healing Through Play**

Parks is an adorable Canine Companions facility dog spreading joy at the Orlando Health Arnold Palmer Hospital for Children in Orlando, Florida. As Parks and his handler, Child Life Specialist Kimberly Burbage, walk through the atrium at the hospital they create a wave of smiles among the children, family members and staff.

Kimberly has worked as a child life specialist at the hospital for 15 years. “I wanted to create this program for several years and I am so excited to now be able to incorporate Parks into the hospital journey of our patients and families. I can already see the impact he is making on our children and adolescents,” says Kimberly.

Parks joined the hospital’s child life team to comfort, motivate and provide fun distraction for chronically and critically ill patients, their families and team members. Parks also performs helpful therapeutic tasks, such as pulling toy wagons, pushing drawers, retrieving items and even playing cards. He also offers a sense of normalcy to the hospital patients.

Kimberly and Parks’ story captured hearts through multiple media stories, sharing the great work the team is doing for children every day.

“Parks has made such a difference in the short time he has been working at the hospital,” Kimberly says. “He motivates our kids and teens that struggle with meeting physical and occupational therapy goals, provides emotional support and play opportunities for our long-term patients and even provides grief support to families that really needed him. Parks brings joy and happiness to our patients and families, and I am grateful to have to him work alongside me every day.”

A grant from the Arnold & Winnie Palmer Foundation was made to support a full-time Canine Companions facility dog at the hospital, making a difference to children in need of extra loving support.

Read more of the wonderful media coverage of Kimberly and Facility Dog Parks at [canine.org/news](https://canine.org/news).





## NextHome Is Key To Canine Companions

Canine Companions partnership with NextHome, a national real estate franchise, started in 2019 and has continued to grow. NextHome drives donation efforts to Canine Companions from over 570 offices nationwide.



Canine Companions graduate Kearria with Service Dog Darling and her mother, Madonna, were invited to speak at the 2022 NextHome Conference in Orlando, Florida. In front of an audience of 1,200, Kearria took the stage and touched hearts with her story of courage, confidence and independence. During the event, NextHome raised over \$25,000 towards our mission.

"NextHome shares the same passion as Canine Companions does for enriching the lives of the people in our communities. Our national network of over 5,300 real estate professionals is fully committed to supporting Canine Companions. This is more than a strategic partnership, it's who we are at our core," shares James Dwiggins, chief executive officer of NextHome.

We're grateful to NextHome and their network for supporting Canine Companions mission. Learn more about corporate partnerships at [canine.org/corporatepartners](https://canine.org/corporatepartners).



## Happy Birthday, Striker!

The Colorado Switchbacks Football Club celebrated their sponsored Canine Companions puppy Striker's first birthday at a soccer game this spring! Striker regularly attends the Switchbacks' games with his volunteer puppy raiser, adapting to new environments, all while cheering on his favorite soccer team. Striker has become a fan-favorite and will soon be gearing up for the next part of his journey: returning to Canine Companions for professional training in August.

Read more about our puppies in the spotlight at [canine.org/puppyspotlight](https://canine.org/puppyspotlight).

## NEW STAFF UPDATES



**Keith Edwards**  
CHIEF FINANCIAL OFFICER

Keith brings more than 25 years of professional experience in auditing, accounting, reporting and financial management from positions within both the for-profit and nonprofit sectors. Originally from the United Kingdom, Keith holds a degree in business administration from the University of Dundee in Scotland, and he is a fellow of the Chartered Association of Certified Accountants in the U.K.



**Dr. Theadora Block**  
RESEARCH PROGRAM MANAGER

Theadora works with the veterinary staff, trainers and our volunteer puppy raisers to gain valuable insight into the health and cognition of our dogs. She recently completed her Ph.D. in ecology & evolutionary biology with a focus on animal behavior from the University of California, Santa Cruz.



**Jim Dugan**  
VETERAN PROGRAMS MANAGER

Jim works with veteran applicants to assist during the application process and helps veteran teams navigate the Department of Veteran Affairs to maximize their service dog benefits. Prior to joining us, Jim was a U.S. Army K9 handler and worked in law enforcement and the service dog industry.



## 365 Days of Puppies!

Pre-order your 2023 Canine Companions Puppy Calendar today! You'll get 12 months of adorable future service dogs. Only one thing could make ordering our 2023 calendar better - you'll receive \$60 in coupons for Eukanuba dog food!

"Working dogs and service dogs are remarkable. Eukanuba continues to provide proper nutrition for these heroic animals. We are so proud to be a partner of Canine Companions for more than 30 years."

— Brad Wadler, Vice President of Eukanuba North America.

Pre-order today at [canine.org/calendar](https://canine.org/calendar).





# Learning How To Heal

During a deployment to Afghanistan, U.S. Army and Marine veteran Ryan Barlow was injured in an improvised explosive device (IED) blast. He suffered massive brain trauma, spinal damage, vision and hearing loss and post-traumatic stress disorder (PTSD).

“I was in a dark place,” says Ryan. “I was having outbursts and was suffering from survivor’s guilt.” His doctors and wife convinced him to apply for a service dog through Canine Companions.

Ryan was matched with Service Dog Ethan in 2014. Ryan says he wouldn’t be here today without Ethan’s physical and psychological support. “I wouldn’t have been able to adopt my three children and learn to love again.” When the time came to receive a new service dog, Canine Companions was there, helping Ryan move forward to open his heart to the dog that would follow in Ethan’s footsteps.



In 2022, Ryan was matched with Service Dog Graham. Ryan works for the Defense Intelligence Agency at MacDill Air Force base in Tampa, Florida. When he goes into the office, Graham opens the thick, heavy glass doors and picks up anything Ryan drops. At home Graham opens the bottom drawer of the refrigerator, helps with laundry and loves snuggling.

Ryan shares, “I am often asked, ‘how long did it take you to recover?’ I never had an answer to that question until I was placed with two service dogs from Canine Companions and I learned how to heal.”

Learn more about service dogs for veterans at [canine.org/veterans](https://canine.org/veterans).

# Celebrate Canine Companions

We’re back with spectacular galas and family-fun DogFest events across the country, celebrating and benefiting Canine Companions!

At all of our galas, guests will meet our clients and their life-changing service dogs, see adorable puppies, hear heart-warming stories and bid on exciting items in our live and silent auctions!



## EVENTS LISTING

- SEPTEMBER**
- Run 4 Paws – September 3 – Melbourne, FL
  - DogFest Alabama – September 10 – Birmingham, AL
  - DogFest San Diego – September 17 – San Diego, CA
  - DogFest Tri-States – September 17 – Ewing Township, NJ
  - Dogfest North Central – September 18 – New Albany, OH
  - DogFest Wine Country – September 18 – Windsor, CA
  - North Texas Giving Day – September 22 – Online Only
  - DogFest Long Island-NYC – September 24 – Massapequa, NY
  - Sit Stay DogFest Washington, D.C. – September 24 – Washington, D.C.
  - Sparkle Santa Rosa – September 24 – Santa Rosa, CA
- OCTOBER**
- DogFest Northwest – October 1 – Virtual Event
  - DogFest Texas – October 1 – Irving, TX
  - Sit Stay Sparkle Orange County – October 15 – Newport Beach, CA
  - DogFest Bay Area – October 22 – Oakland, CA
  - Tails & Tales Gala – October 22 – Orlando, FL\*
- NOVEMBER**
- National Graduation Day – November 4\*
  - Salute Independence – November 9 – New Hyde Park, NY
  - Sit Stay Sparkle Seattle – November 5\* – Seattle, WA
  - Arizona Valley of the Sun Golf Classic – November 7 – Chandler, AZ

**Sit Stay Sparkle** is our signature gala event, featuring good food, great drinks and a wonderful experience. Join us in: Santa Rosa, CA [canine.org/SitStaySparkle](https://canine.org/SitStaySparkle), Newport Beach, CA [canine.org/SitStaySparkleSWR](https://canine.org/SitStaySparkleSWR) or Seattle, WA [canine.org/SitStaySparkleSeattle](https://canine.org/SitStaySparkleSeattle).

**Tales & Tails** is the beloved gala you won’t want to miss! Join us at Rosen Shingle Creek in Orlando, Florida, this October 22. Visit [canine.org/galacelebration22](https://canine.org/galacelebration22).

**DogFest** is a tail-wagging good time! This family-friendly festival is held around the country. Check out an event near you at [canine.org/DogFest](https://canine.org/DogFest).

**Salute Independence** celebrates our Canine Companions service members. Held in New Hyde Park, New York each November, you’ll want to mark your calendars today! Learn more at [canine.org/saluteindependence](https://canine.org/saluteindependence).

\*Hybrid in-person/virtual event



## Leave Your Mark on the Kinkeade Campus

The South Central Region's Baylor Scott & White Health – Kinkeade Campus has a new feature, allowing supporters to add a personal touch to the campus. Donors can purchase a bench, tree, boulder or paver to feature in a new tribute garden. Donation levels range from \$250 to \$10,000 and can be customized to recognize a special person or dog in your life, with an option to include a personal message. This generous support allows us to continue our mission of providing expertly trained service dogs at no cost to clients. If you would like to contribute to the tribute garden, please call 1-800-572-BARK or email the South Central Region development team at [info@canine.org](mailto:info@canine.org).



## A Hole in One

Golf is more than a favorite past time in the Canine Companions community. It's also a great way to fundraise for our mission. The Greater Atlanta Volunteer Chapter hosted the 3rd annual Chip in for Canines in April, raising \$300,000 since its inception. In the Northwest Region, the fourth Annual Putting for Pups Golf Classic topped \$135,000, raised since 2018. The New Mexico Enchanted Canines Golf Classic was a hit in June! There's more golf to come in our Southwest Region – get more information at [canine.org/swrgolf](https://canine.org/swrgolf).

Getting on the green is not the only way golf impacts Canine Companions programs. Some of our clients love spending time on the golf course. Our trainers in the Northeast Region wanted to be sure their service dogs were comfortable in the unique setting of a golf cart.



Thanks to Fairway Golf Car, a neighbor to the campus, our dogs in professional training are able to practice riding safely in golf carts!

## Investing In Independence

Over the past 3 years, the Veterans United Foundation has donated \$61,000 to name and furnish a disability-accessible guest suite at the North Central Training Center. The suite hosts veterans and people with disabilities who travel to Ohio to be matched with their service dog and participate in Team Training. The on-campus guest suites provide clients with a safe, stress-free, accessible environment.

The Veterans United Foundation's generosity will impact more than 1,800 people and veterans with disabilities. We look forward to continuing the partnership. Learn how to make an impactful donation at [canine.org/donate](https://canine.org/donate).



## Therapy Dogs Making a Difference

Canine Companions therapy dog program has provided a new career path for over 70 Canine Companions dogs – those released from service dog training, as well as retired service dogs and breeder dogs – since the first pilot program rolled out in 2020. Therapy dogs provide comfort to people in schools, clinics and other places where the love of a dog can help. Currently, therapy dogs are certified at our training centers in California and Texas, with plans to expand to Ohio and New York later this year.

As part of the program's expansion, Canine Companions is looking for volunteers to become therapy dog evaluators in the field. Learn more at [canine.org/therapydogs](https://canine.org/therapydogs).

## Imagine Independence 2022

### *Incredible Imagine Independence!*

Thanks to our Utah community, including the Wasatch Volunteer Chapter and dedicated sponsors, our 2022 Imagine Independence virtual event was an incredible success! The event raised over \$120,000 to support our mission of providing expertly trained service dogs to children, adults and veterans with disabilities, completely free of charge. Canine Companions and the Southwest Region look forward to continuing this amazing event next year, in-person!

FOR THE LOVE OF  
**DOGS AND GREAT WINE**  
ST. FRANCIS  
WINERY & VINEYARDS

BUY A BOTTLE,  
GIVE \$1.00.



For every bottle of St. Francis wine purchased online and in stores through 2022, the winery will donate \$1.00 up to \$100,000.



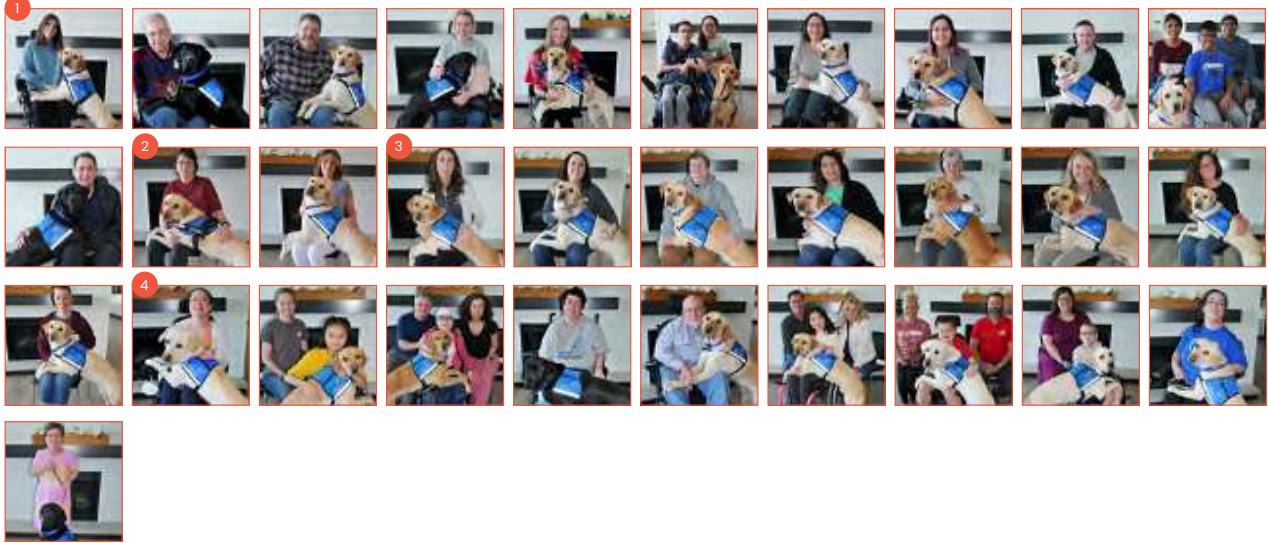


# 2022 Team Training Yearbook

The teams pictured below have been expertly matched during two weeks of Team Training, where handlers learn how to work with their service dog to enhance independence. Congratulations!

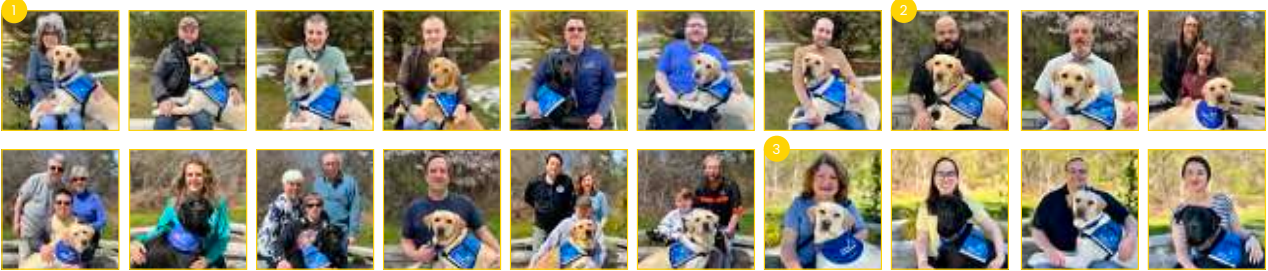
## NORTH CENTRAL

**1. FEBRUARY** Abby with Scarlettta; Ben with Nebraska; Craig with Yoko; Emily with Venus; Erica with Atlas; Liam & Meaghan with Nugget; Mona with Flo; Shelby with McNabb; Trevor with Tristan; Tsiang, Shern & Vishesh with Harrison; Vince with Neptune. **2. MARCH** Diana with Quint; Tara with Kenzo. **3. APRIL** Amy with Alicia; Amy with Wavey; Deanna with Zev; Jean with Trio; JoAnne with Alejandro; Jordan with Micky; Megan with Tyra; Noelle with Twinkle. **4. MAY** Ashley with Kade; Feifei & Kathleen with Loxley; Grace, Lauren & Chris with Lessa; Katie with Indy; Mike with Essex; Myer, Ally & Greg with Johnny; Noah, Tracy & Chad with Bolero; Patrick & Brieanne with Julio; Rebecca with Lucinda; Sharna with Mark.



## NORTHEAST

**1. FEBRUARY** Dianne with Trilby; Joe with Jem; John with Yoken; Matt with Boylan; Matt with Robo; Matt with Yancy; Nick with Steel. **2. APRIL** Benny with Onora; Greg with Aster; Hannah & Mary with Egan; Isaac, Anita & Timothy with Winfield; Jerri with Ludo; Justin, Carl & Michelle with Legolas; Mark with Zarin; Rand, Betsy & Randall with Broadway; Ryan & Robert with Blues. **3. MAY** Cara with Winsome; Catherine with Sylvia; Jim with El; Rachel with Sage.



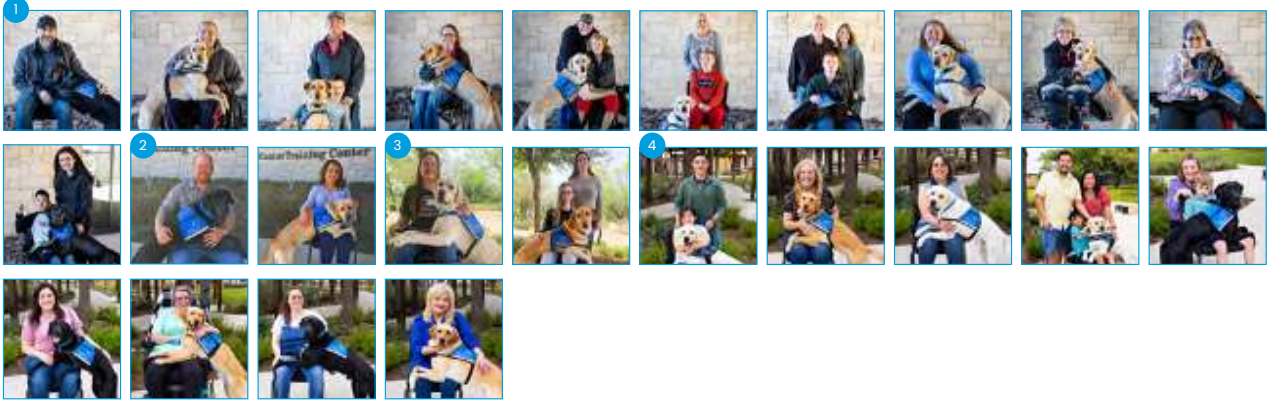
## NORTHWEST

**1. OCTOBER 2021** Grant with Kaleka; Sharon with Tilley; Sheri with Nala. **2. FEBRUARY** Delanee with Copper; Jim and Abner; Richard Jr. with Nano. **3. MARCH** Chris with Loren; Connie with Petunia; Jane with Paula; Janet with Queenie; Sandy with Kendal; Suzy with Amy. **4. APRIL** Connor, Bruce & Kari with Athena; David, Matt & Kathy with Fontina; Katie & Veronica with Worthy; Katie with Jaco; Kendall & Courtney with Gwen; Mike with Winter; Nehemiah, Claudia & Ivan with Claire; Parker & Anna with Harbor. **5. MAY** Makenzie with Price; Marilyn with Topaz; Michael with Florin; Rosemary with Dom; Tim with Poppy.



## SOUTH CENTRAL

**1. FEBRUARY** Billy with Farrah; Bradly with Reinhold; Brady & Marcus with Romer; Chelsey with Cinco; Danette with Mikuni; Isaac & Kristi with Madge; Jack, Jamie & Susan with Harold; Jeanne-Marie with Eiffel; Kenney with Zeppelin; Tracey with Beau; Wyatt & Brook with Bali. **2. MARCH** Matthew with Emmeline; Nancy with Venice. **3. APRIL** Christie with Ortiz; Sarah & Tamara with Kelsey. **4. MAY** Anastasia & Shaun with Riley; Angela with PJ; Esther with Tucker; Evan, Steve & Jessica with Riva; Ford & Alli with Clayton; Kacie with Val; Liz with Pablo; Shelley with Fletcher; Ursula with Helen.



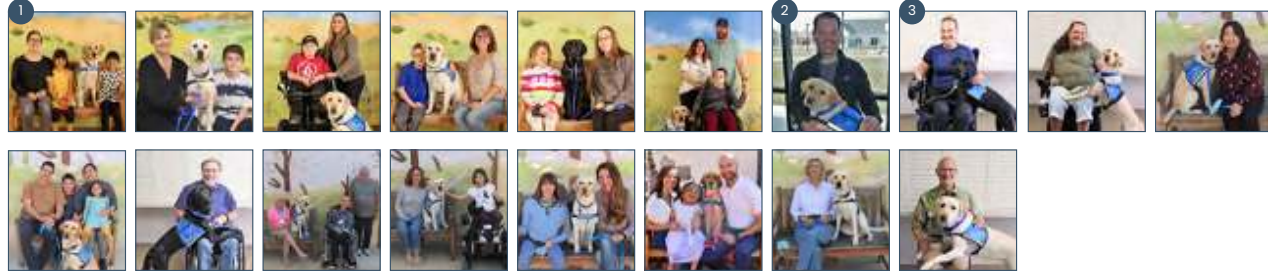
## SOUTHEAST

**1. FEBRUARY** Christine with Boulder; Deborah with Brinkley; Easton & Jennifer Wisdom; Erica with Oso; Kim with Parks; Matthew with Yonder; Mollie with Beta; Nicole with Westley; Renee with Georgia. **2. MARCH** Betsy with Britta; Carter & Julie with Arthur; Jessica with Angel; Kate with Winner; Marsha with Roxanne; Ryan with Graham. **3. MAY** Angie & Jessica with November; Finn & Beth with Corinne; Henry, Melissa & Chris with Noki; Izzy & Alana with Aurora; Joshua, Lily & Steven with Bach; Judi with Rose; Keegan, Katie & Kevin with Faust; Kenzie with Yona; Patricia with Penn; Sarah with Petry; Sharon with Quantum.



## SOUTHWEST

**1. FEBRUARY** Ava & Maria with Idina; Holden & Jennifer with Gala; Isiah & Desiree with Woody; Jonathan & Lezlie with Zimmer; Kayce & Shauna with Kirsten; Nicole & Andrew with Harvey. **2. MARCH** Dominic with Ann. **3. MAY** Alex with Shauna; Angela with Daffodil; Courtney with Satin; Donovan & Michael with Akela; Gary with Barbie; Jimmy, Angie & James with Pierre; Liv & Sharon with Edie; Nadia & Karen with Tassel; Nika, Sarah & Steven with Waverly; Susan with Peppi; Todd with Jewel.



Make more matches possible.  
Donate at [canine.org/donate](https://canine.org/donate).



## Board Members

### OFFICERS

**John McKinney**  
CHAIR

Healdsburg, CA

**Leslie Hennessy, PhD**  
TREASURER

Colorado Springs, CO

**Steve Boyd**

SECRETARY

Dallas, TX

### MEMBERS

**John Elliott**

Naperville, IL

**Anne Gittinger**

BOARD CHAIR EMERITUS

Seattle, WA

**Mel Gottlieb**

Rose Bay, Australia

**Barrie Graham**

Novato, CA

**Russ Gurevitch, DVM**

Penn Grove, CA

**John Hopen**

Sebastopol, CA

**Carolyn Hrach**

Sewickley, PA

**Judge Ed Kinkeade**

Irving, TX

**Chris Kittredge**

Santa Rosa, CA

**Robert Lavie**

Dallas, TX

**Michelle Ludwig, MD**

Houston, TX

**John Miller**

IMMEDIATE PAST CHAIR

Naples, FL

**Juergen Rottler**

Gaienhofen, Germany

**Robin Sanchez**

Winter Garden, FL

**Jean Schulz**

BOARD CHAIR EMERITUS

Santa Rosa, CA

**Bill White**

Winter Park, FL

**Emily Williams**

Santa Rosa, CA

**Paige Mazzoni**

CHIEF EXECUTIVE OFFICER

Santa Rosa, CA



PO Box 446  
Santa Rosa, CA 95402-0446  
Address Service Requested

*If you receive duplicate issues,  
please contact us and pass extras  
along to friends.*

Nonprofit Org.  
U.S. Postage

**PAID**

By Canine  
Companions  
for Independence

## Honorary & Associate Board

**Judy Allen**

Palm Desert, CA

**Jack Hanna**

Powell, OH

**Dean & Gerda Koontz**

Newport Beach, CA

**John Beere**

LPCC PRESIDENT, EX-OFFICIO

Manassas, VA

**Terry Levin**

San Francisco, CA

**Madeleine Paulson**

Rancho Santa Fe, CA

**Jon Provost**

Santa Rosa, CA

## Training Centers

**Headquarters**

**& Northwest Region**

Santa Rosa, CA

**Southwest Region**

Oceanside, CA

**Southeast Region**

Orlando, FL

**Northeast Region**

Medford, NY

**North Central Region**

New Albany, OH

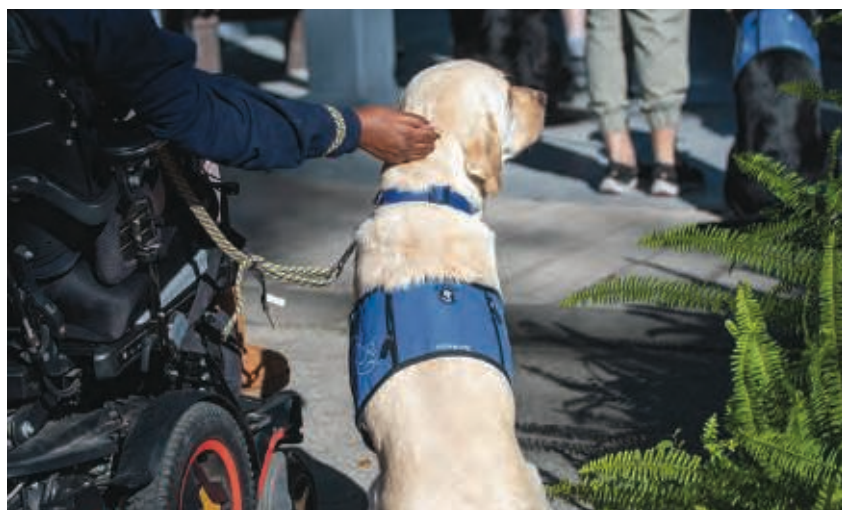
**South Central Region**

Irving, TX

Email: [info@canine.org](mailto:info@canine.org) Website: [canine.org](http://canine.org)

Phone: 1-800-572-BARK (2275)

©2022 Canine Companions. All rights reserved.



National Corporate Partner

**Eukanuba**

**Service Dog Oso empowers Erica to move forward.**

Read how on page 12.